

November 2015

# Research Newsletter

Welcome to the latest edition of the Faculty of Health, Social Care and Education research newsletter.

As guest editors of this issue of the FHSCE Research Newsletter, we would like to thank colleagues for sending an impressive selection of research activities. Our job editing the newsletter was one of relative ease: focusing simply on collation and sequencing of information. However, while undertaking this editorial work, we did feel that the research activities included offered a very helpful insight into the scope and quality of the work colleagues are undertaking. Collectively, for us, these activities (appointments, presentations, awards, publications) also provide a valuable indication of our impact. We therefore hope you find this update provides a useful account of our latest accomplishments – **Scott Reeves & Simon Fletcher**

Please note: the information included in the newsletter is to the best of our knowledge up-to-date. We of course apologise if any recent research activity has been unduly omitted.

## Latest Research News

### School of Education wins Erasmus Plus grant



Erasmus+

The School of Education has been awarded just under €350,000 for a new Strategic Partnership project under the Erasmus Plus scheme. The three-year project, entitled “Enhancing the education and wellbeing of disadvantaged toddlers through the development of training and materials to support early years practitioners” will be coordinated by KU and led by **Helen Sutherland**, Senior Lecturer and Course Director for Early Years Initial Teacher Training. Helen will be working with Stavanger University in Norway and Ramon Llull University in Barcelona, together with four early years settings and local authorities in the three regions, including Achieving for Children in Kingston. The aim of the project is to provide a unique continuing professional development opportunity (CPD) for early years practitioners in the three partner countries, focussing on the needs of disadvantaged toddlers, using a more holistic approach which addresses the wellbeing of the child. The project will build on work undertaken in a previous Comenius project, **TODDLER**, which developed some initial materials. Marcus Bhargava, Head of the School of Education, said “This is a great opportunity for the School to lead a European project which will have an impact on an important area of education. This success recognises our expertise and experience in early years and will strengthen our links in Europe and with local service”.

### Julie Harrison presented with a PhD



**Julie Harrison**, Senior Lecturer in the School of Midwifery, was presented with a PhD at London's Barbican Centre on 16 July 2015. Julie was awarded her doctorate from St George's, University of London, by the Principal, **Peter Kopelman**, amidst a full audience of fellow graduands, their family and friends, academic staff and honoured guests, including Sir Robert Francis, Sir Peter Rubin and Professor Raymond Tallis (who all received honorary degrees of Doctor of Science in Medicine). Julie's doctoral work which focussed on finding the optimal method for auscultating the fetal heart during childbirth using a variety of methods to make comparisons, was supervised by Emeritus Professor of Obstetrics and Gynaecology at St Georges, Sir Sabaratnam Arulkumaran.

### Faculty-led NIHR funded research project

**Vari Drennan** has been awarded just under £490,000 by the NIHR to undertake a significant research project exploring the contribution of physician associates (PAs) to secondary care in England. In addition to a number of co-investigators, **Mary Halter** and **Robert Grant** will also apply their expertise to the study. PAs represent an interesting population in healthcare research as their relatively recent introduction yet increasing presence in NHS contexts makes the study of their influence both important and revealing. [www.nets.nihr.ac.uk/projects/hsdr/141926](http://www.nets.nihr.ac.uk/projects/hsdr/141926)



**National Institute for  
Health Research**






# Faculty International News

## 34th International Congress of Law and Mental Health, Vienna

**Mary Chambers** coordinated and led a symposium on 'Therapeutic Engagement: the key to reducing coercive practice' at the XXXIVth International Congress on Law and Mental Health, Sigmund Freud University, Vienna. For the symposium, papers were presented by Russell Ashmore (Sheffield Hallam University) Mary Chambers, Pauline Cusack (University of Central Lancashire) Iris Gault (Associate Professor, FHSCE), Mirella Genziani (PhD student, FHSCE) and Susan McAndrew (University of Salford). All papers focused on different aspects of the Mental Health Act 1983/2007 and the importance of therapeutic engagement.



## 6th International Carers Conferences, Gothenburg.



**Nan Greenwood** presented at the International Carers Conference in Gothenburg, Sweden in early September. The two presentations came from a qualitative NIHRSSCR funded project and are entitled:

- ⇒ The human dimensions of post-stroke homecare: experiences of older carers from diverse ethnic groups in the UK
- ⇒ Experiences of social care services amongst older black & minority ethnic & white British carers of stroke survivors

## International collaborative software development

**Robert Grant** has become one of an international team of twenty statisticians and programmers contributing to the development of Stan, open-source software for Bayesian statistics. The project is co-ordinated by Andrew Gelman at Columbia University and named after physicist Stanislaw Ulam, whose work modelling nuclear fission in the 1940s is the ancestor of the algorithms used in Stan today. By mimicking the flowing movement of physical objects, Stan allows researchers to obtain answers to complex statistical models about 100 times faster than previous Bayesian software. The Stan website is: [www.mc-stan.org](http://www.mc-stan.org)



## World Confederation for Physical Therapy



**Agnieszka Lewko** and **Ann Ooms** presented a paper at the World Confederation for Physical Therapy (WPCT) Congress in Singapore in May entitled: Differences in Current Approaches to Respiratory Physiotherapy Student Practice Education Across Europe

## Scott Reeves delivers keynote speeches over four continents

Over the past few months **Scott Reeves** has delivered the following keynote presentations to audiences in The Netherlands, Brazil, USA and Australia:

- Examining the Evidence for Interprofessional Education: What Do We Really Know About Its Effects? Interprofessional Health, Education and Practice International Conference, Melbourne, Australia, October 2015
- Interprofessional collaboration – emergence, evidence and ways forward. 5th European Conference on Interprofessional Practice and Education, Nijmegen, The Netherlands, August 2015
- Interprofessionality as a means for inducing changes in healthcare work and training. Interprofessional Education and Work for Promoting Equity within the Healthcare Networks of the Brazilian National Health System, Natal, Brazil, July 2015
- Examining the evidence base for interprofessional education. World Federation of Athlete Trainers and Therapists, St Louis, USA, June 2015

# Faculty News

## Athena SWAN Bronze Award for Healthcare Department

The **Equality Challenge Unit's Athena SWAN Charter** was established in 2005 to encourage and recognise commitment to advancing the careers of women in science, technology, engineering, mathematics and medicine (STEMM) employment in higher education and research

In May 2015 the charter was expanded to recognise work undertaken in arts, humanities, social sciences, business and law (AHSSBL), and in professional and support roles, and for trans staff and students. The charter now recognises work undertaken to address gender equality more broadly, and not just barriers to progression that affect women. ECU's Athena SWAN Charter covers women (and men where appropriate) in: Academic roles in STEMM and AHSSBL; Professional and support staff and Trans staff and students in relation to their: representation; progression of students into academia; journey through career milestones and working environment for all staff.

There are three levels of Athena SWAN award: bronze, silver and gold. Kingston University and St Georges, University of London were both successful in achieving the Athena SWAN Bronze Award in 2014.

In December 2014, it was agreed that **our Faculty would pursue achievement of its own Bronze Award as a Department of Healthcare** (Education and Social Work were excluded as originally outside of the STEMM criteria).

Subsequently, 20 staff representatives and students from all Healthcare Schools and Centres were nominated to be part of the Athena SWAN Self-Assessment Team (SAT), which is led by **Jayne Marshall** (Midwifery) and **Ann Ooms** (Nursing).

The Athena SWAN SAT is currently working on preparing an application for the Athena SWAN Bronze Award to be submitted in November 2015. This particular level of award recognises that having assessed quantitative and qualitative staff and student data, particular challenges and opportunities within the department have been identified and appropriate action plans subsequently devised. See the Athena SWAN SAT working group site on Nexus for the Department Terms of Reference (and to find out who your representative is).

For more details about Athena SWAN go to: [www.ecu.ac.uk/equality-charters/athena-swan/](http://www.ecu.ac.uk/equality-charters/athena-swan/)



## Appointments

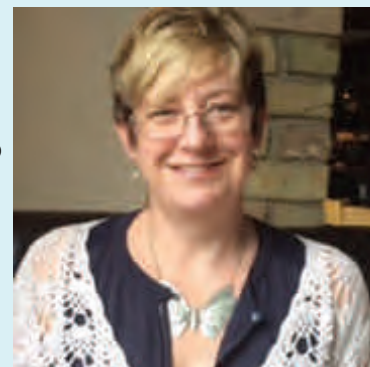
**Scott Reeves** was recently appointed to the External Advisory Board of PROFRES, a PhD research training collaborative between the Universities of Agder, Nordland and Stavanger, Norway.



**Ann Ooms** School of Nursing has also become member of the editorial board of SAGE Open.

## Introducing.....New Faculty staff

The School of Midwifery welcomed Senior Lecturer **Lesley Kay** at the beginning of September. Lesley's role is split between assisting the Head of School, **Jayne Marshall** in the development of the School's research profile as well as contributing to its teaching and learning activities. Lesley previously worked at Anglia Ruskin University until 2009 when she took a career break to focus on her doctoral work. Her PhD study undertaken at the University of Lancaster (UCLAN) used a hermeneutic phenomenological approach to consider how pregnant women experience stories of birth and was supervised by Soo Downe. Lesley is due to submit her thesis at the end of September and we wish her well in this and in developing her role within the School of Midwifery and Faculty.





# Research calls

For the latest funding opportunities please visit the Research funding page on Nexus: <https://staffspace.kingston.ac.uk/teams/hscs/research/Pages/research-funding.aspx> -

The Research Team in the Faculty can also assist with searching for funding opportunities and can be contacted on: [researchteam@sgul.kingston.ac.uk](mailto:researchteam@sgul.kingston.ac.uk)

## Faculty Small Grant Scheme

FHSCE Small Grant Scheme 2015/16 – Provides funding for a fourth wave of projects, to the value of £4,000 each to be spent by July 2016, although activities can be completed by November 2016. The application deadline is midnight, Friday 27<sup>th</sup> November, please email your application to the RBDE Team: [researchteam@sgul.kingston.ac.uk](mailto:researchteam@sgul.kingston.ac.uk)

## KU research investment schemes

KU three research investment schemes open for bids – **closing date 25<sup>th</sup> November 2015**

### Research Development Fund: Guidelines and Criteria for allocation

The purpose of this fund is to build capacity in emerging areas of research which are able to demonstrate the potential to achieve the required standard for submission to REF2020. It is expected that bids for support will in the main be for those research areas that were considered but not submitted to REF2014. Research areas must be able to demonstrate an appropriate level of track record on which to build. A sum of £120k is available for allocation in 2015/16. Further rounds may follow depending on the success of the scheme.

### First Grants Scheme

The First Grants Schemes is open to early career researchers, i.e. academic staff who are within six years of the start of their academic career and who are eligible to apply for independent funding in their own right. It is intended to provide pump-priming grants to initiate work on research projects which must in turn result in a high quality application for external research funding. A sum of approximately £50k in 2015/16 will be ring fenced from the Research Transformation Fund for this purpose. Grants of between £5 to £10k will be awarded.

### Research Transformation Fund: Guidance and criteria for allocation

The University has allocated resource over three years to establish a Research Transformation Fund. This funding is intended to support new initiatives which will enable the University to achieve a step change in research performance leading in turn to a significant improvement in REF2020 outcomes. Available funding over a three year period will be as follows: 2015/16—£200k; 2016/17—£400K; 2017/18—£400K, 2018/19—£200k.

Priority for support will be given to existing REF units in the first instance.

**All applications** are to be submitted using the forms on Nexus (Research pages), via the Associate Dean for Research – Vari Drennan to consider with a sub group of the Faculty Research Committee and Annual Monitoring of Research Steering Group.

Applications by 5pm on 25<sup>th</sup> November 2015 to be sent to the Faculty Research Support Team: [researchteam@sgul.kingston.ac.uk](mailto:researchteam@sgul.kingston.ac.uk)

Queries to [v.drennan@sgul.kingston.ac.uk](mailto:v.drennan@sgul.kingston.ac.uk) or ring 0208 725 2339

## Faculty Research Calendar

Please see the 2015-16 Research Calendar on Nexus for a comprehensive listing of 'all things research' for the forthcoming academic year : <https://staffspace.kingston.ac.uk/teams/hscs/research/Pages/Research-calendar.aspx>



# Latest Research Grants and Publications

## New Grants

- **Drennan, V, Grant, R, Halter, M et al**, Investigating the contribution of physician associates (PAs) to secondary care in England: a mixed methods study, National Institutes for Health Research: £483,779
- Price S, **Reeves, S**, Tomblin-Murphy G. Promoting Interprofessional Collaboration: A Program of Research. Scotia Support Grant, Nova Scotia Health Research Foundation, Canada: \$50,000
- **Reeves S, Fletcher, S**. Team-based online learning for primary care teams: a scoping review. iHeed, Dublin, Ireland. €24,978
- **Reeves, S**. Interprofessional education: Common language consultation and workshop. Health Education England, North West London. Amount: £6,300
- **Tuffrey-Wijne, I**. Improving the communication of bad news to people with learning disabilities. South West London Academic, Health and Social Care System. Amount: £9,983

## Peer-reviewed Research Papers - Published

Alexanian J., Kitto S., Rak K., **Reeves, S**. (2015) 'Beyond the Team: Understanding interprofessional work in two North American ICUs'. *Critical Care Medicine*. 43:1880-1886.

Foster, H., **Ooms, A.**, Marks-Maran, D. (2015) 'Nursing Students' Expectations and Experiences of Mentorship'. *Nurse Education Today*, 35(1), pp. 18-24.

Fox A., **Reeves, S**. (2015) 'Interprofessional collaborative patient-centred care: a critical exploration of two related discourses'. *Journal of Interprofessional Care*. 29: 113-118.

Fung L., Boet S., Bould MD., Qosa H., Perrier L., Tricco A., Tavares W., **Reeves S**. (2015) 'Impact of crisis resource management simulation-based training for interprofessional and interdisciplinary teams: A systematic review'. *Journal of Interprofessional Care*. 29: 433-444

Gale J., **Ooms, A.**, Newcombe, P., and Marks-Maran, D. (2015) 'A Study of Students' First Year Experience on a BSc (Hons) in Nursing'. *Nurse Education Today*. 35(1), pp. 256-2.

Goldman J., **Reeves S.**, Wu R., Silver I., MacMillan K., Kitto S. (2015) 'Medical Residents and Interprofessional Interactions in Discharge: An Ethnographic Exploration of Factors That Affect Negotiation'. *Journal of General Internal Medicine*. 10:1454-1460.

**Greenwood N., Smith R.** (2015) 'Barriers and facilitators for male carers in accessing formal and informal support: a systematic review'. *Maturitas* V82, Issue 2: pp. 162-169

Hurlock-Chorostecki C., van Soeren M., MacMillan K., Sidani S., Donald F., **Reeves S**. (2015) 'Nurse practitioner interactions in acute and long-term care: an exploration of the role of knotworking in supporting interprofessional collaboration'. *BMC Nursing*; 14:50

Hurlock-Chorostecki C., van Soeren M., MacMillan K., Sidani S., Collins L., Harbman P., Donald F., **Reeves S**. (2015) 'A survey of interprofessional activity of acute and long-term care employed nurse practitioners'. *Journal of the American Association of Nurse Practitioners*. 27: 507-513.

Kitto S., Goldman J., Etchells E., Silver I., Peller J., Sargeant J., **Reeves S.**, Bell M. (2015) 'Quality improvement, patient safety, and continuing education: a qualitative study of the current boundaries and opportunities for collaboration between these domains'. *Academic Medicine*. 90:240-245.

**Koskela S. A.**, Pettitt B., **Drennan V. M.** (2015) 'The Experiences of People with Mental Health Problems Who are Victims of Crime with the Police in England: A Qualitative Study'. *British Journal of Criminology*. Doi: 10.1093/bjc/azv087.

Maloney S., Nicklen P., Rivers G., Ooi YY., **Reeves S.**, Walsh., Ilic D. (2015) 'A cost-effectiveness analyses of online versus face-to-face delivery of evidence-based medicine to medical students'. *Journal of Medical Internet Research*. 17(7):e182

**Marshall J. E.** (2015) 'The power of the lead midwife for education (LME): the role, function and challenges' *MIDIRS Midwifery Digest* 25(1) pp 11-14.

Muleya C. M., **Marshall J. E.**, Ashwin C. (2015) 'Nursing and Midwifery Students' Perceptions and Experiences of Mentorship: A Systematic Review'. *Open Journal of Nursing*. 5, pp 571-586.

Petrocnik P., **Marshall J. E.** (2015) 'Hands-on or hands-poised: what does the evidence say?' *The Practising Midwife*, July/August 18(7) pp 10-12.

Rivers G., Foo J., Ilic D., Nicklen P., **Reeves S.**, Walsh K., Maloney S. (2015) 'The economic value of an investment in physiotherapy education: a net present value analysis'. *Journal of Physiotherapy*; 61:148-154.

# Peer-reviewed Publications — In Press

- Gale, J., Ooms, A.,** Sharples, K., Marks-Maran, D. (in press). The Experiences of Student Nurses on Placements with Practice Nurses: A Pilot Study.
- Ginelly A., Greenwood N.** (in press). Screening adult patients with a tracheostomy tube for dysphagia: a mixed methods study of practice in the United Kingdom. *International Journal of Language and Communication Disorders*.
- Olding M., McMillan S., **Reeves S.**, Schmitt M., Puntillo K., Kitto S. (in press). Patient and family involvement in adult critical and intensive care settings: a scoping review. *Health Expectations*.
- Sidani S., Collins L., Harbman P., Hurlock-Chorostecki C., MacMillan K., **Reeves S.**, Donald F., van Soeren M., Staples P. (in press). Description of Nurse Practitioners' Self-Report Implementation of patient-centered care. *European Journal of Person Centered Healthcare*.
- Sundberg K., Josephson A., **Reeves S.**, Nordquist J. (in press). Power and resistance: leading change in medical education. *Studies in Higher Education*.
- Tuffrey-Wijne I.**, McLaughlin D., Curfs L., Dusart A., Hoenger C., McEnhill L., Read S., Ryan K., Satgé D., Straßer B., Westergård B., Oliver D. (in press). Defining consensus norms for palliative care of people with intellectual disabilities in Europe, using Delphi methods: A White Paper from the European Association of Palliative Care (EAPC). *Palliative Medicine*.
- Tuffrey-Wijne I.**, Williams E. (in press). Health care professionals have special needs when they become patients. *British Journal of General Practice*.
- Tuffrey-Wijne I.**, Watchman K. (in press). Breaking bad news to people with learning disabilities and dementia. *Learning Disability Practice*.
- Tuffrey-Wijne I.**, (in press). A new EAPC White Paper on palliative care for people with intellectual disabilities. *European Journal of Palliative Care*.

## Other Publications

- Tuffrey-Wijne I.**, McLaughlin D. (in press) .Consensus norms for palliative care of people with intellectual disabilities in Europe: EAPC White Paper. European Association of Palliative Care. This White Paper will go on-line on the EAPC website, as soon as the Palliative Medicine paper (see above) is published online.
- Bekkema N., **Tuffrey-Wijne I.**, Wagemans A., Hertogh C., Francke A., De Veer A. (2015). Decision-making about the best place of palliative care for people with intellectual disabilities: a guide for care staff and healthcare professionals providing palliative care for people with intellectual disabilities. / Utrecht: NIVEL. <http://www.nivel.nl/sites/default/files/bestanden/Handreiking-decisionmaking-palliative-care-disabilities.pdf>

## KU Open Access

Open Access means making the outputs of research freely accessible to all, and removing barriers to sharing knowledge. This confers a benefit to researchers by publicly showcasing your research and maximising the potential audience. Kingston University is committed to ensuring that all of our research outputs are openly accessible. This reflects our commitment to producing research with the potential to make a significant economic, social and cultural impact. We believe that our open access mandate will achieve maximum visibility and accessibility for our research.

[You can download Kingston University's Open Access policy](#) via the KU StaffSpace page :

[https://staffspace.kingston.ac.uk/dep/researchsupport/open\\_access/Pages/default.aspx](https://staffspace.kingston.ac.uk/dep/researchsupport/open_access/Pages/default.aspx)

Please note that your journal articles and conferences proceedings (with ISSN) will not be eligible for submission to the next REF if they aren't compliant with the HEFCE Open Access policy.

<http://www.hefce.ac.uk/pubs/year/2014/201407/>

# Presentations

## Oral

- Fish J and **Gillman L** (2015) 'Developing a pan-London Midwifery Practice Assessment Document' Innovation in Midwifery Education...what works? Conference, 3rd July 2015. Bournemouth University.
- Gillman L** (2015) 'The culture and context of protecting the perineum during physiological birth' FHSCE Graduate Student Symposium 17th June 2015, Kingston University.
- Gillman L** (2015) 'Developing new assessment models for grading clinical practice'. NET2015 Conference, 8th -10th September 2015, Cambridge.
- Fish J and **Gillman L** (2015) 'Developing a midwifery pan-London practice assessment document for pre-registration midwifery programmes' NET2015 Conference, 8th -10th September 2015, Cambridge

## Poster

- Forman J**, Duaso M and Harris M (2015) 'A review of the provision of smoking cessation education within UK midwifery school curricula', UK Nicotine and Smoking Cessation Conference, 11-12 June 2015, Manchester.
- Gillman L, Sims G** (2015) 'Student Engagement in Assessment Feedback' Kingston Education Research Network Forum 19th June 2015, Kingston University.
- Gillman L. J** (2015) 'Head, heart and hands: new concepts for assessing and grading midwifery practice' Innovation in Midwifery Education...what works? Conference, 3rd July 2015, Bournemouth University.
- Gillman L** (2015) 'The culture and context of protecting the perineum during physiological birth: an ethnographic study' Physiological Birth: Promoting Normality Conference, 11th September 2015, London.
- Harrison J. M, Marshall J. E, Price JE** (2015) 'Third year student midwives' and newly qualified midwives' lived experience of the acquisition of knowledge and practice of normal childbirth', 10<sup>th</sup> International Normal Labour and Birth Conference, 15-17 June 2015, Grange over Sands, Lake District.

# Information and Contacts

## FACULTY PROFESSORS

Mary Chambers, Mental Health Nursing

[M.Chambers@sgul.kingston.ac.uk](mailto:M.Chambers@sgul.kingston.ac.uk)

Ray Jones, Social Work

[R.L.Jones@sgul.kingston.ac.uk](mailto:R.L.Jones@sgul.kingston.ac.uk)

Jane Lindsay, Social Work Practice

[J.F.Lindsay@sgul.kingston.ac.uk](mailto:J.F.Lindsay@sgul.kingston.ac.uk)

Annette Boaz, Healthcare Research

[A.Boaz@sgul.kingston.ac.uk](mailto:A.Boaz@sgul.kingston.ac.uk)

Keith Grieves, Professor of History

[K.Grieves@kingston.ac.uk](mailto:K.Grieves@kingston.ac.uk)

Vari Drennan, Health and Social Care Policy

[V.Drennan@sgul.kingston.ac.uk](mailto:V.Drennan@sgul.kingston.ac.uk)

Mike Hurley, Rehabilitation Sciences

[M.Hurley@sgul.kingston.ac.uk](mailto:M.Hurley@sgul.kingston.ac.uk)

Scott Reeves, Interprofessional Research

[S.Reeves@sgul.kingston.ac.uk](mailto:S.Reeves@sgul.kingston.ac.uk)

Fiona Jones

[F.Jones@sgul.kingston.ac.uk](mailto:F.Jones@sgul.kingston.ac.uk)

Fiona Ross, CBE, Professor of Research

[F.M.Ross@sgul.kingston.ac.uk](mailto:F.M.Ross@sgul.kingston.ac.uk)

## ACADEMIC CONTACTS

For Research Degrees MPhil/

PhDs:

Dr Annette Boaz,

[A.Boaz@sgul.kingston.ac.uk](mailto:A.Boaz@sgul.kingston.ac.uk)

and

Dr Victoria Perselli,

[V.Perselli@kingston.ac.uk](mailto:V.Perselli@kingston.ac.uk)

Doctor of Education (EdD)

Professor Keith Grieves

[K.Grieves@kingston.ac.uk](mailto:K.Grieves@kingston.ac.uk)

# Committee Contacts

Faculty Research Ethics Committee

Chair (s) [Nigel Rogers](#) & [Nan Greenwood](#)

Clerk: [Holly Pilkington](#)

Faculty Research Committee

Chair : [Vari Drennan](#)

Clerk: [Dominic Morris](#)

Faculty Research Degrees Committee

Chair (s) [Annette Boaz](#) & [Victoria Perselli](#)

Clerk: [Ayesha Jeary](#)

If you have any stories or information for the next issue of the Faculty Research Newsletter, please contact the Research, Business Development and Enterprise Team: [researchteam@sgul.kingston.ac.uk](mailto:researchteam@sgul.kingston.ac.uk)  
Research Twitter account: [@RESEARCH\\_KUSGUL](#)

To see a full list of publications, please visit the [Kingston University Research Repository](#)